



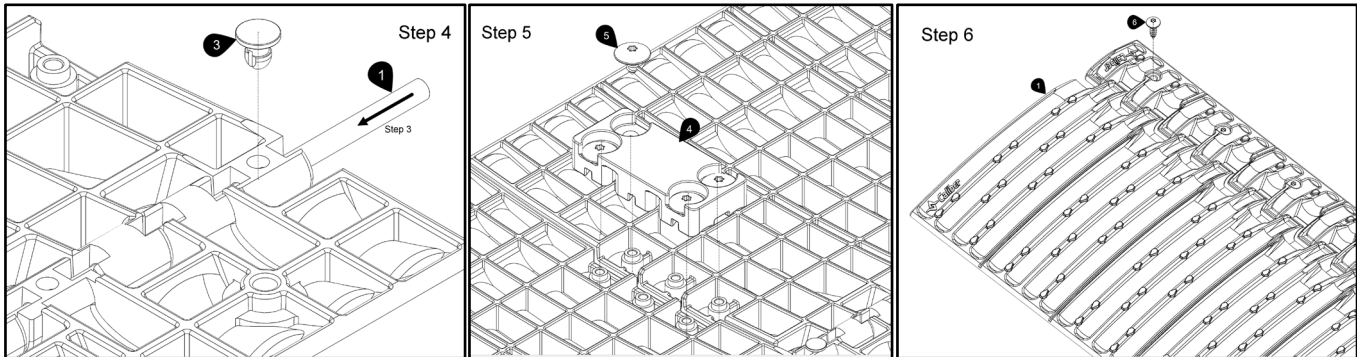
READ ALL INSTRUCTIONS CAREFULLY PRIOR TO INSTALLATION

4 pc. Edge Glide 2.0 Parts List			
Item No.	Part Number	Description	QTY
1	CR0105	Edge Glide Assembly	4
3	CH0534	Push Fasteners	9
4	CR1253	Rubber Link	3
5	CH0535	Truss Head Screw, #10 x 3/8", SST	12
6	CH0538	Truss Head Screw, #10 x 3/4", SST	32
7	CHP0113	T20 Torx Bit	1

Tools Required
Power Drill
Tape Measure
Pencil or Maker
5/32 or 11/64 Drill Bit
Saw or Cutter

Installation Instructions:

- Remove contents from packaging, and separate hardware components.
- Measure door size, or trailer opening to determine overall assembly size needed.
 - If needed – use provided cut lines (every 3") to resize Edge Glide pieces to ensure proper fit for door size or trailer opening. Glides may be cut with any saw suitable for wood, metal, or plastic.*
- Hinge rod is already installed in part, for trimming see below.
 - Hinge rods will need to be trimmed if part is resized for installation. Ensure each rod is 1" shorter than overall assembly size.*
- Use provided push-pin fasteners to contain hinge rods in their position.
- Using the provided rubber links and fasteners, on the back side of the component, secure each portion of Edge Glide to the next.
- Position Edge Glide pieces on the trailer and fasten them in place with provided fasteners.
 - If fastening to aluminum pre-drilling recommended*



DISCLAIMER: Caliber, Inc. shall not be liable for any special, incidental or consequential damages, including, but not limited to, lost revenues, lost profits, personal injury, damage to property, and third-party claims, arising out of any warranty, contract, statutory or tort. Notwithstanding the term of any limited warranty or any warranty implied by law, or in the event that any limited warranty fails of its essential purpose, in no event will Caliber’s entire liability exceed the purchase price of this product.

LIMITED LIFETIME WARRANTY: Caliber, Inc. warrants that this product will be free from defects in material or workmanship, under normal use, installation and service. Caliber, Inc. reserves the right, before having any obligation under this limited warranty, to inspect the damaged Caliber product. All warranty shipping costs for inspection shall be borne solely by the purchaser. This limited warranty is transferable. *Contact Caliber at our website or at 952-985-9999*